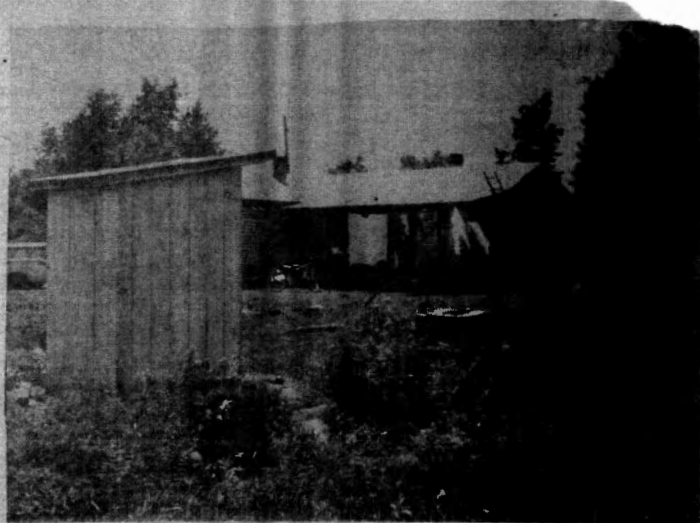


**VOTE FOR
BETTER HOUSING**

**NOT FOR
SLUM-LORD GRAY**

...
**THESE "HOMES" ARE
REPRESENTATIVE OF
THE SLUMS GARLAND
GRAY OWNS IN
WAVERLY, VIRGINIA**



**SOUTHSIDE VIRGINIA
NEEDS A VIGOROUS
AND PROGRESSIVE
REPRESENTATIVE IN
OUR STATE SENATE.
STRONACH IS A MAN
WHO SUPPORTS
BETTER EDUCATION-
BETTER PUBLIC HEALTH
FACILITIES, AND A
FAIR AND JUST TAX
STRUCTURE ! ! ! !**



CAREY E. STRONACH

**PHYSICIST, EDUCATOR,
MUSICIAN, RESIDENT OF
BATTLEFIELD PARK,
PRINCE GEORGE COUNTY.
BACHELOR OF SCIENCE-
UNIVERSITY OF RICHMOND.
MASTER OF SCIENCE -
UNIVERSITY OF VIRGINIA.
RESIDENT OF SOUTHSIDE
VIRGINIA FOR 22 YEARS.**

VOTE FOR: DEMOCRATIC PRIMARY - TUESDAY, JULY 13, 1965

X **Carey E. Stronach**

FOR 6th SENATORIAL DISTRICT

2950 W. Park Drive
P.O. Box 1547
"Take Pride In Southside"

Elect **RE 25897**
Carey E.

STRONACH
To STATE SENATE

Subject to Democratic Primary

Tuesday, July 13, 1965



**YOUR VOTE AND INFLUENCE
WILL BE GREATLY APPRECIATED!**

(over)

