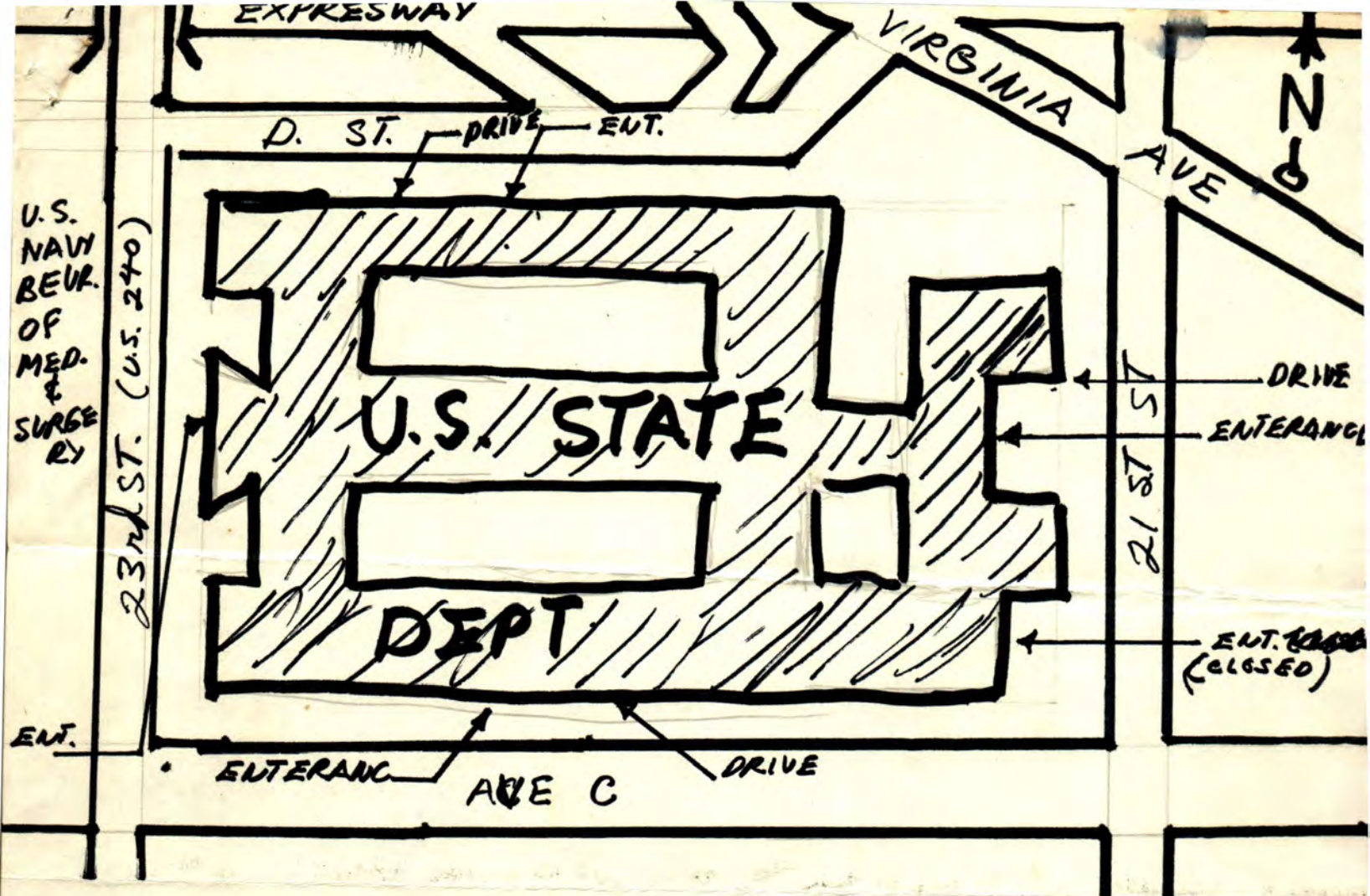


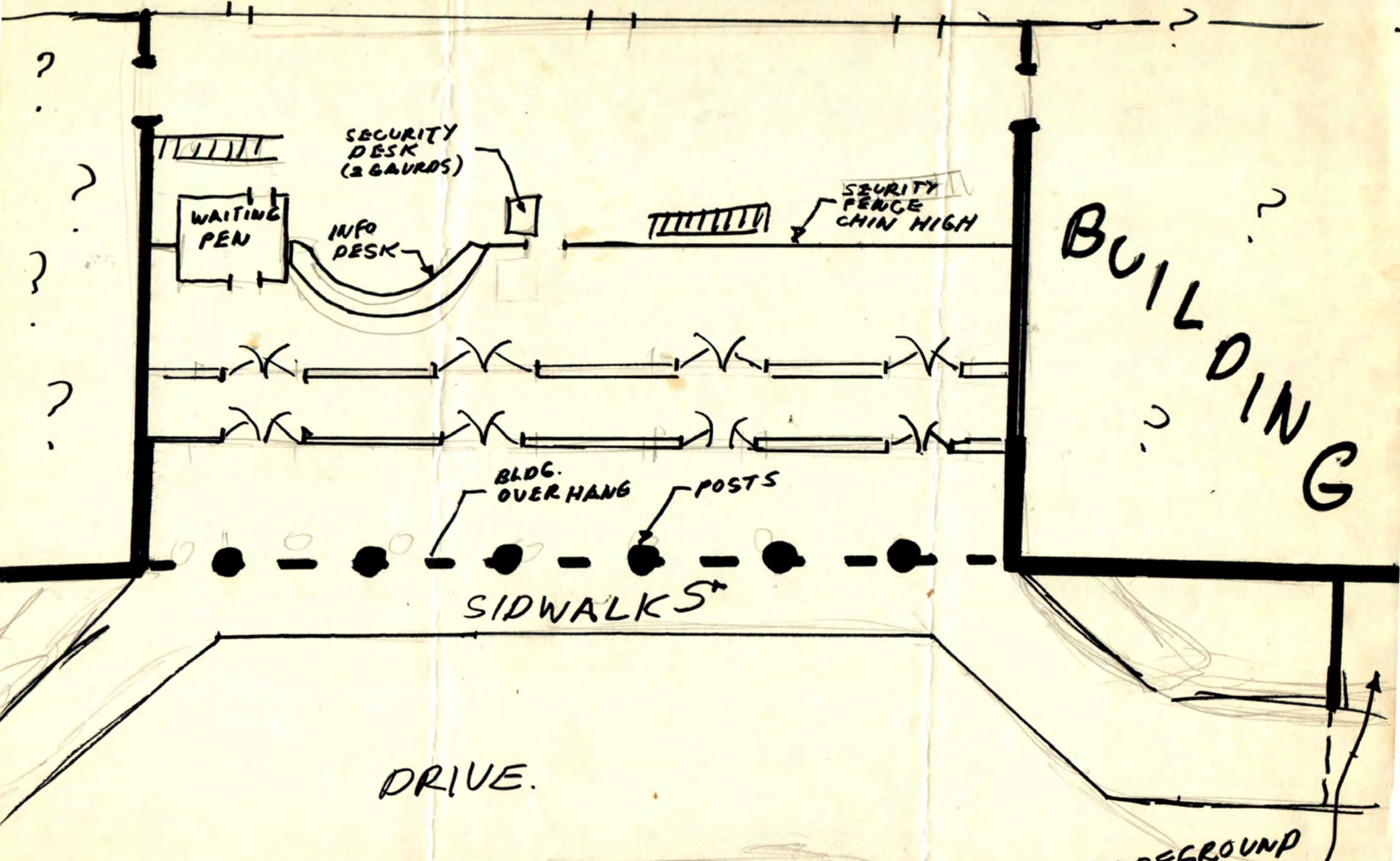
**SOUTH
ENTRANCE**

**DRIVE
DOWN
(NOT SHOWN)**



1. 4 MAIN ENTERANCES (SEE DIAGRAM AND DETAIL DRAWING) AND 1 SECONDARY ENT KEPT CLOSED
2. 3 DRIVE WAY TO UNDEGROUND PARKING LOT WITH INTERIOR ACCESS TO BLDG
3. ALL ENTERANCES TO INTERIOR OF BLDG GAURDED BY SECURITY CHECKPOINTS (SEE DETAIL)
4. ABOUT 25% CHANCE OF CONNECTING TUNNELS TO OTHER BUILDINGS
5. DRIVEWAYS ~~WIDE~~ ABOUT 15-20 SIT-INS WIDE. 100 SIT-IN WITH LOCKED ARMS COULD BLOCK FOR MIN OF ~~20 MIN~~ 1 1/2 HOUR PROBABLY LONGER (ASGUMING STANDARD POLICE - SIT-IN PROCEDURE)
6. DOORWAYS - 300-400 FOR 1 HOUR BLOCK (IF OUTSIDE DOOR)
7. 100 SIT-INS COULD BLOCK SECURITY CHECKPOINT FOR 1 1/2 Hr. (IF THEY COULD GET BETWEEN CHECKPOINT AND DOORS, INSIDE BLDG.)

COURTYARD



BUILDING

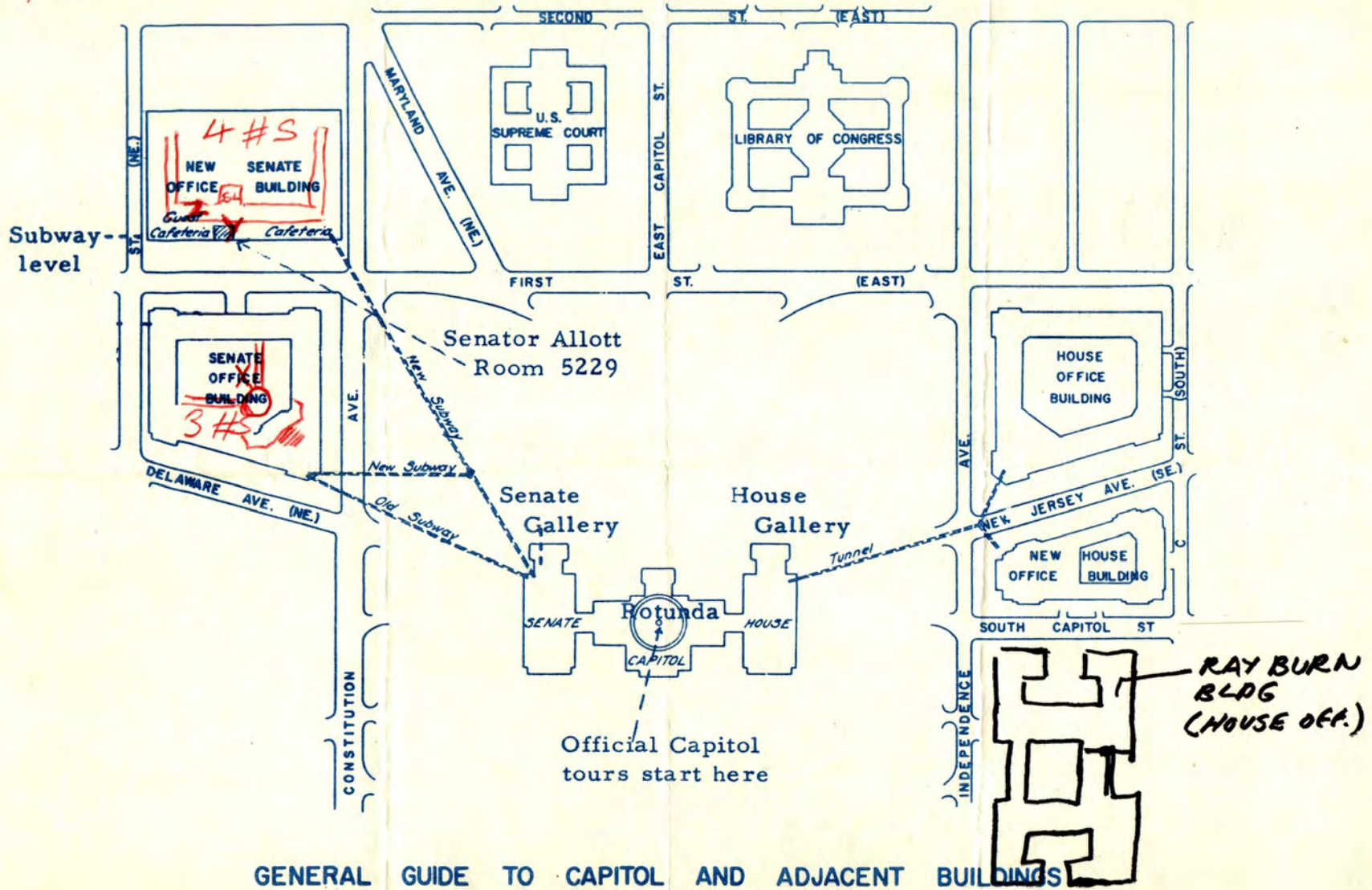
DRIVE.

UNDEGROUND DRIVEWAY

DETAIL NORTH & SOUTH
 ENTRANCES. (E & W
 PROBABLY SIMILIAR

X - Armed Service
Y - app 1235
Z - F.R. 4-229

old B location E-10
N B 10-15



Compliments of Senator Gordon Allott

2ND ST E.

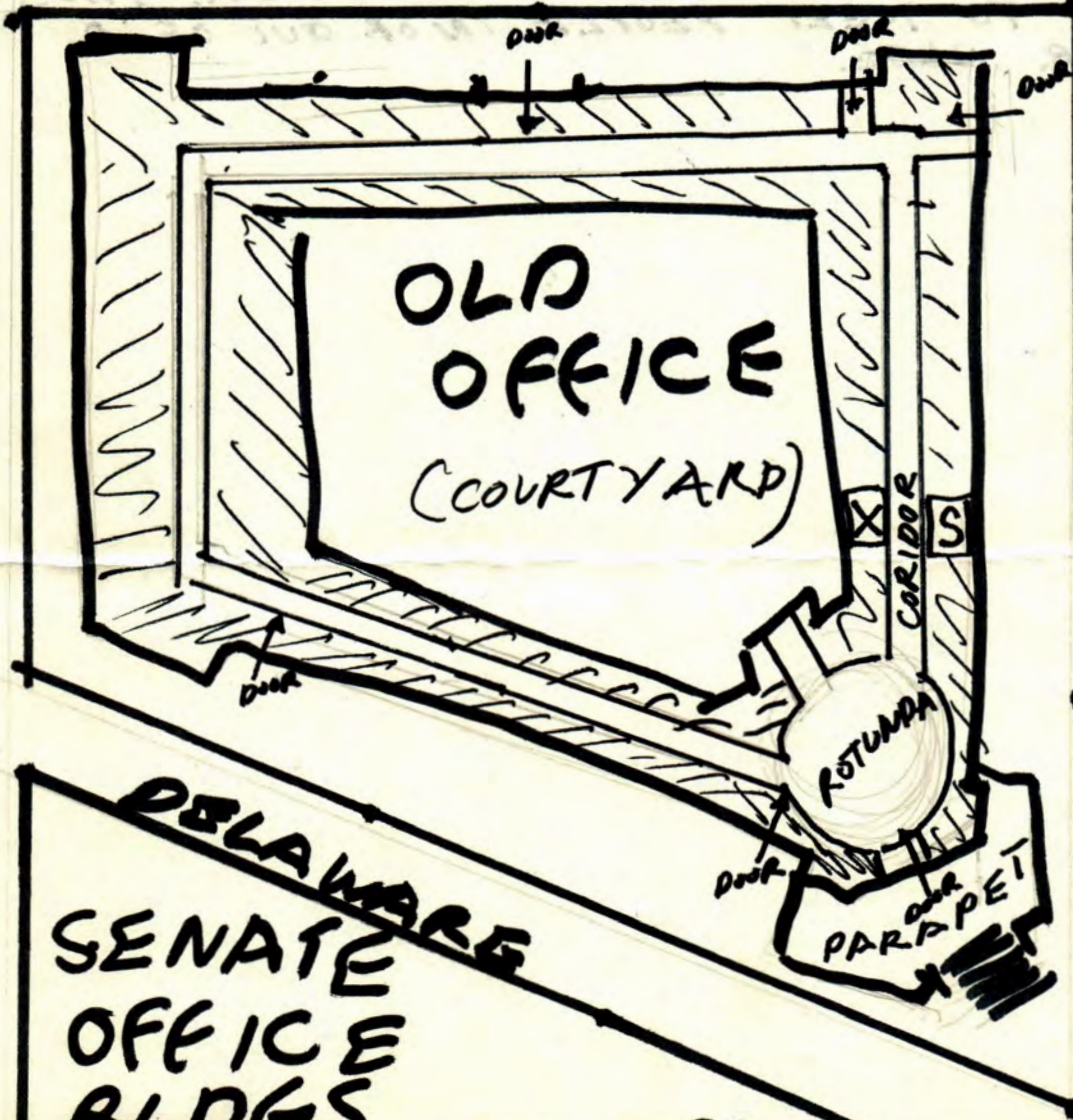


APPROPRIATE COMM 1ST FLOOR

FOREIGN RELATION 4TH FLOOR

EL = ELEVATION (NOT ALL MARKED)

1ST ST



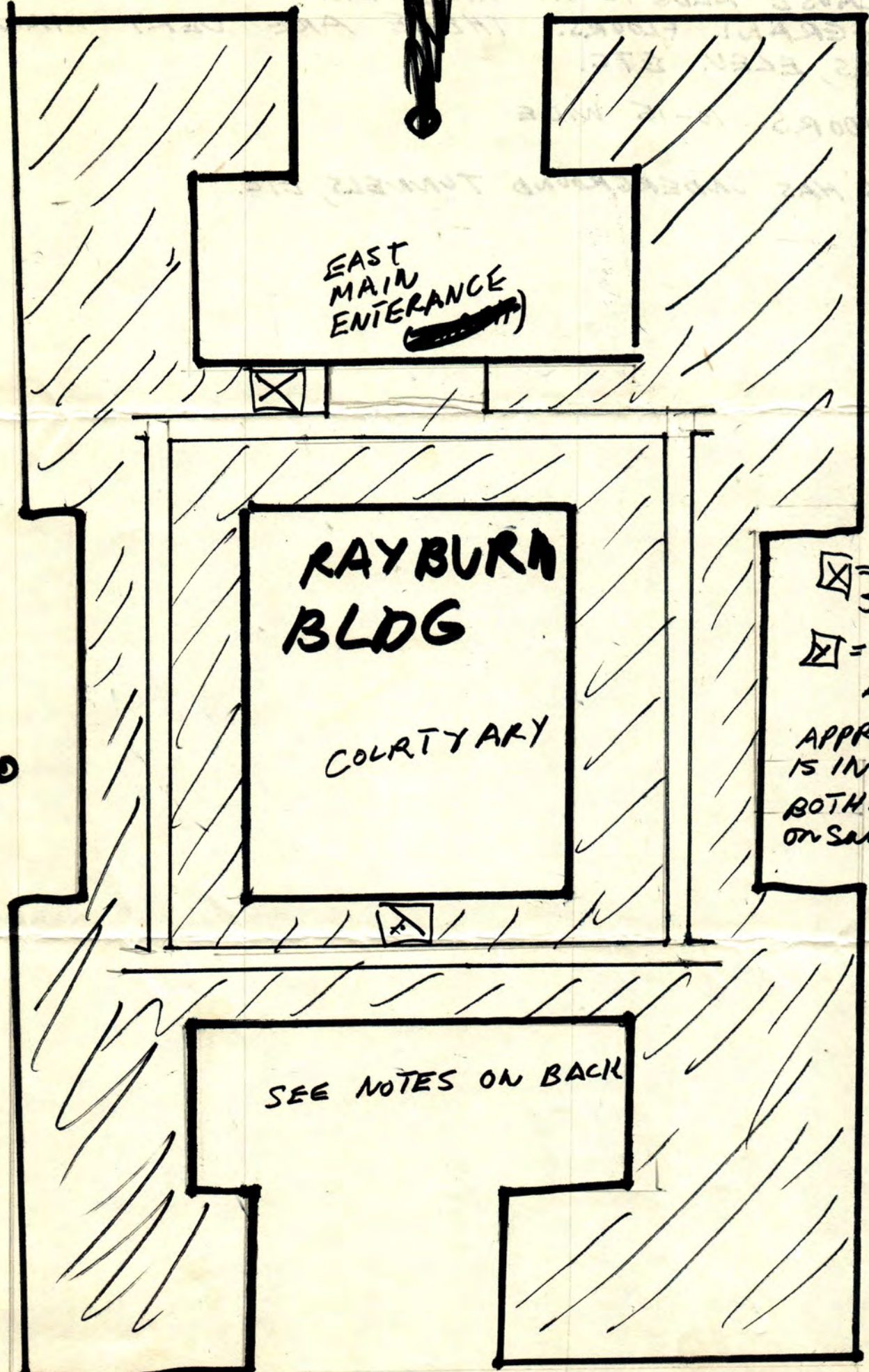
ARMED SERVICE COMM (1ST FLOOR MAIN)

STENNIS OFFICE ACROSS HALL

N ↑

DELAWARE
SENATE
OFFICE
BLDGS
SEE NOTES ON BACK

CONSTITUTION



EAST
MAIN
ENTRANCE

RAYBURN
BLDG

COURTYARD

☒ = ARMED
SERVICE
☒ = FOREIGN
AFFAIRS
APPROPRIATION
IS IN CAPITOL.
BOTH ☒ & ☒ are
on same floor

N →

SEE NOTES ON BACK

SELECTIVE SERVICE

F ST

MAIN ENT

BASEMENT DOOR(?)

DOWN

BIDE DOOR
BASEMENT

DOOR
BASEMENT

DOOR(?)

BASEMENT
DOOR?

PAY
PARKING
LOT

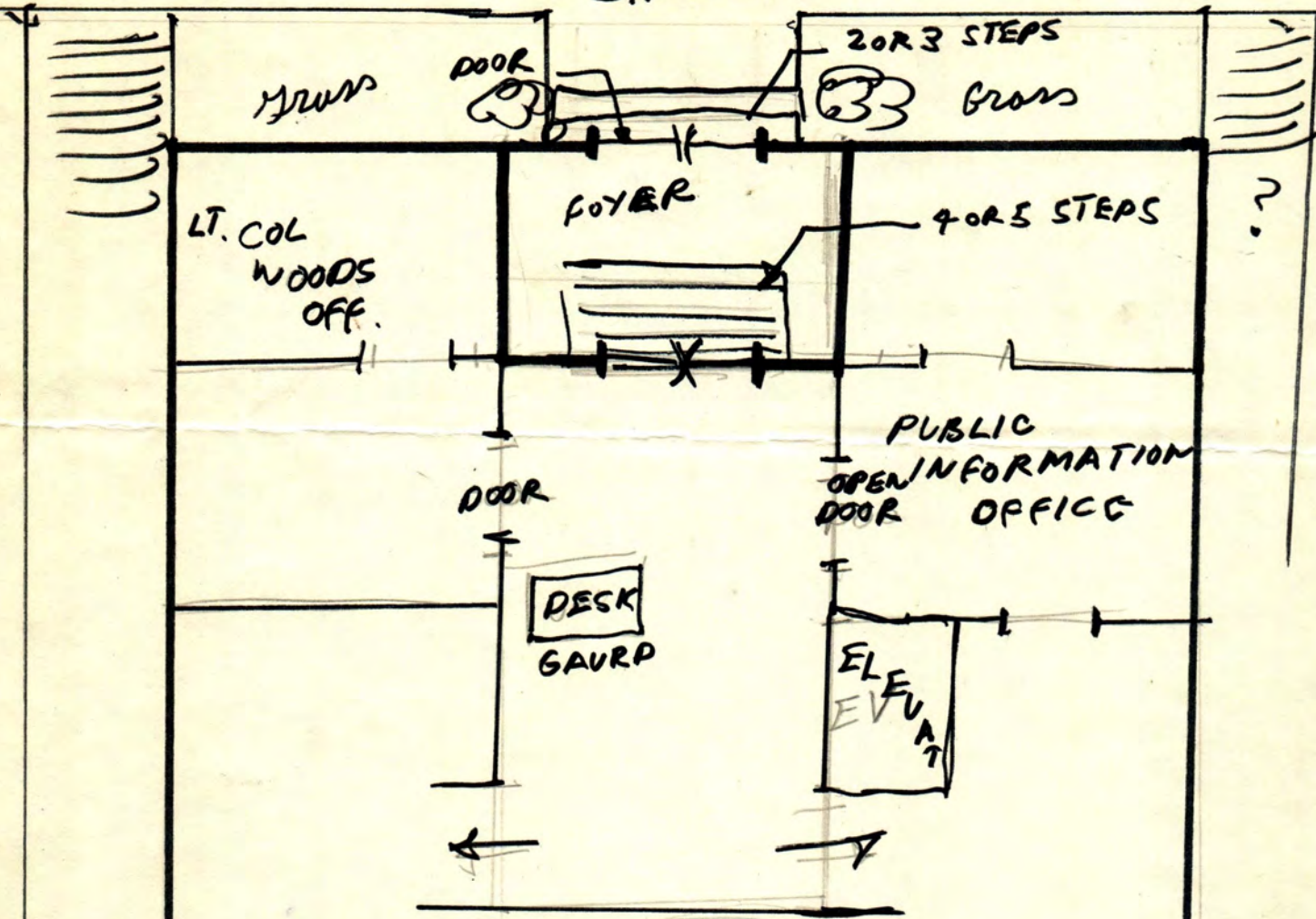
SELECTIVE
SERVICE

FEDERAL
DEPOSIT
INS.
BLDG.

15
17TH ST

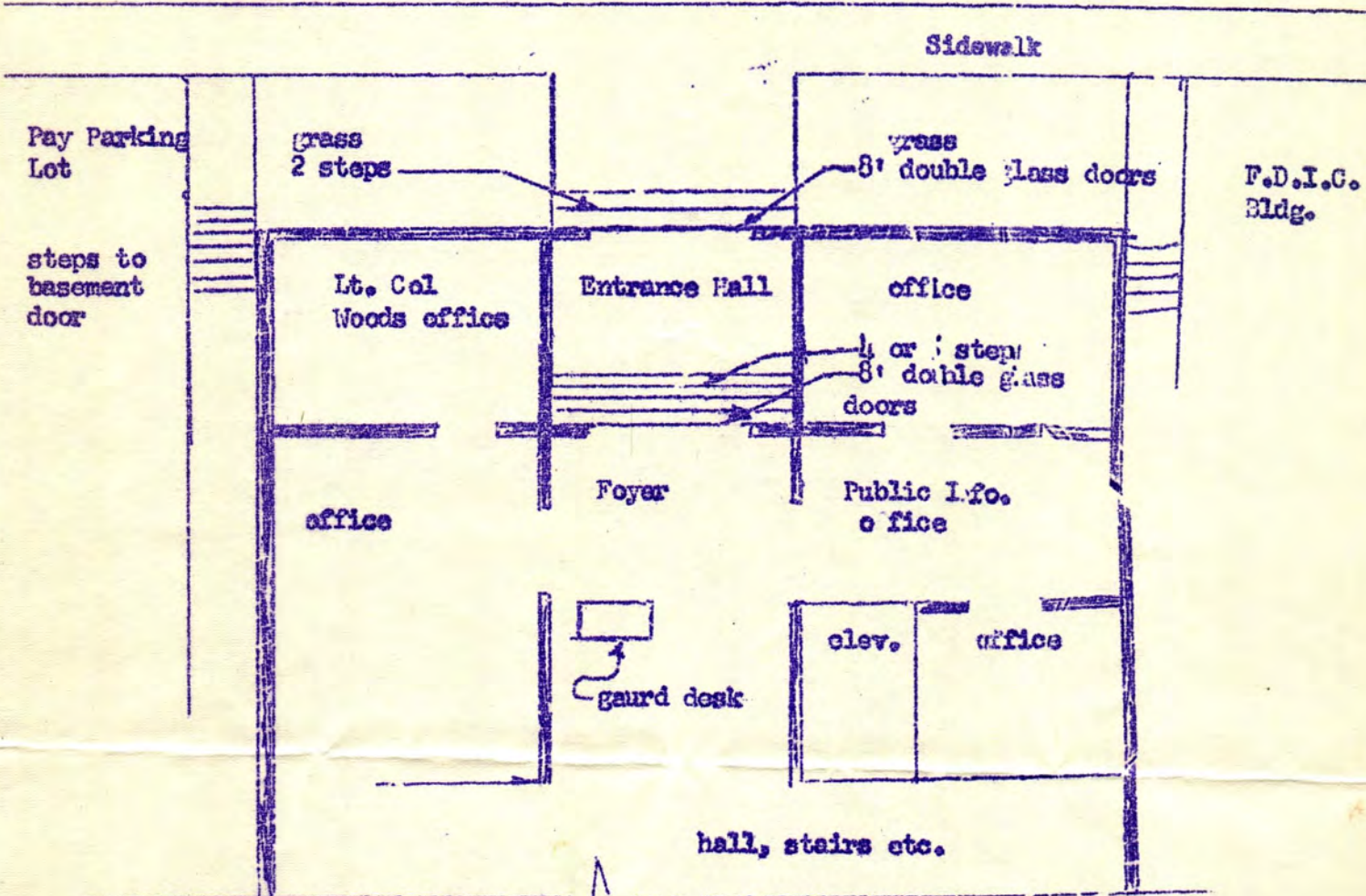
EXECUTIVE
OFFICE
OF
WHITE
HOUSE

SIDWALK



1. BLDG NOT BIG.
2. COULDN'T CASE IT VERY WELL, GAURDS VERY SUSPICIOUS
3. 1. MAIN ENT. 8' DOORS
4. ~~25-30~~ 25-30 ~~peopl~~ SITING COULD COMPLETELY BLOCK FOYER AND INTERIOR STEPS
5. HERSHEY OFFICE ON TOP FLOOR, (1/2) SIXTH. 610 R 612

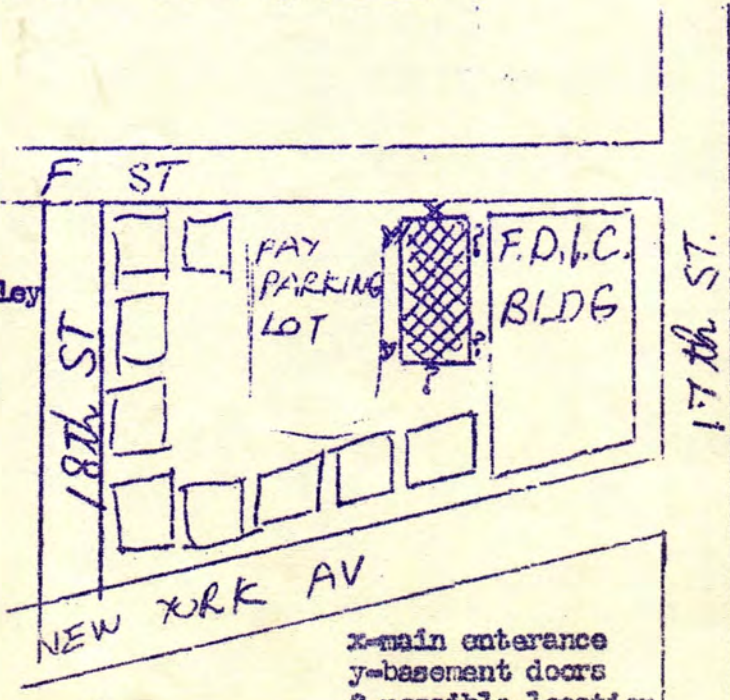
F STREET



NATIONAL HEADQUARTERS
SELECTIVE SERVICE

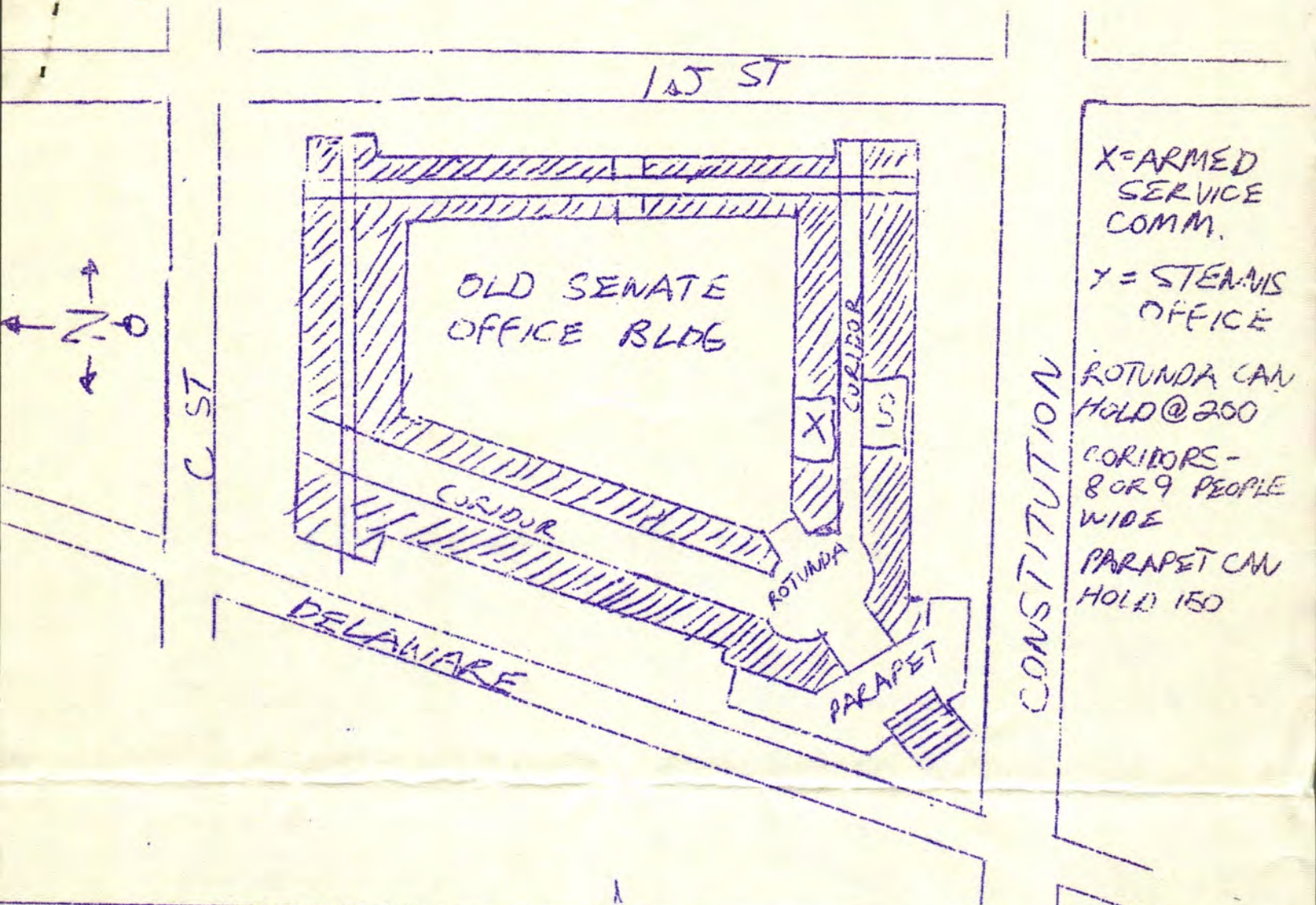
NOTES

- 1-small building
- 2-probably no tunnels
- 3-entrance hall could hold no more than 25 ~~200~~ sit-ins.
- 4-foyer area could hold no more than 100 (possibly) no more than 75
- 5-Mersheys office is on 6th (top) floor



EXEC.
OFFICE
OF
THE
WHITE
HOUSE

x-main entrance
y-basement doors
?-possible location



X=ARMED SERVICE COMM.

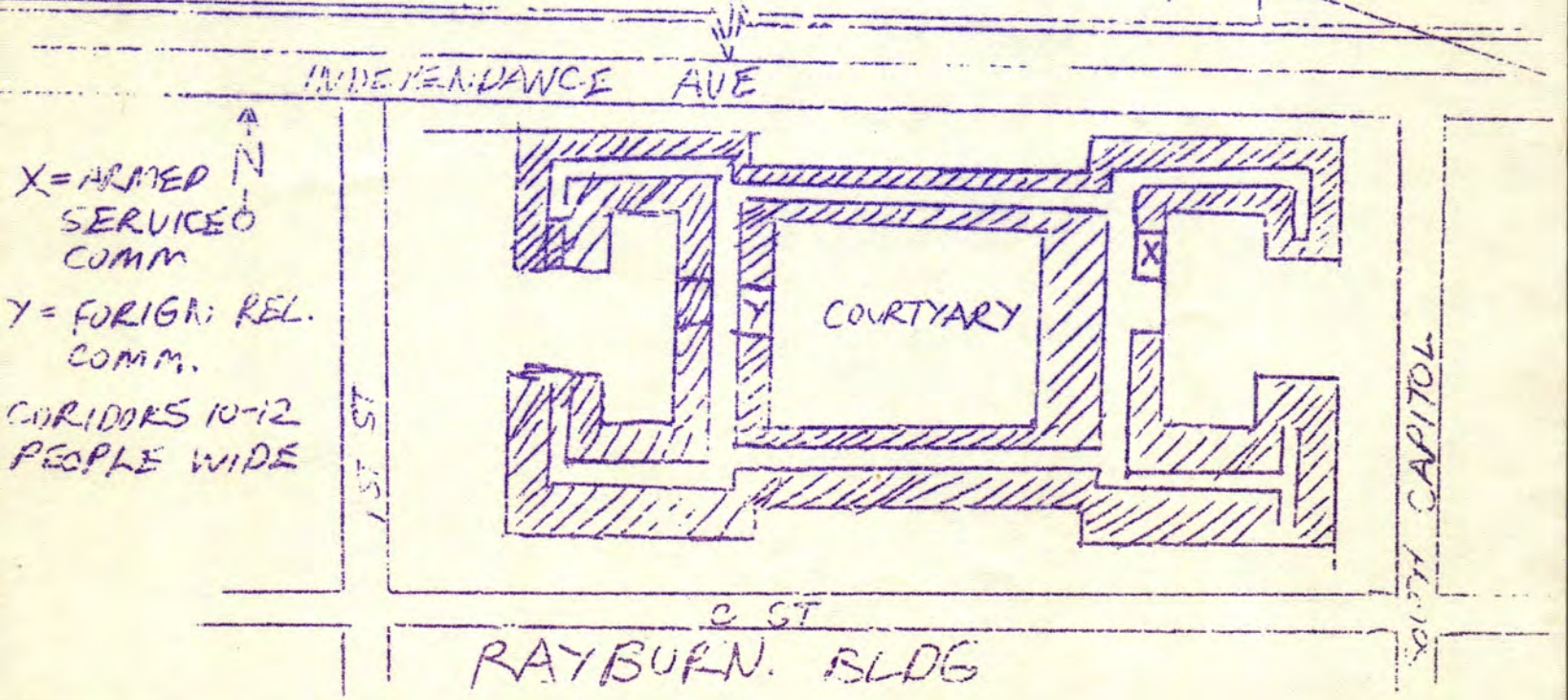
Y=STENAGIS OFFICE

ROTUNDA CAN HOLD @ 200

CORRIDORS - 8 OR 9 PEOPLE WIDE

PARAPET CAN HOLD 150

CONSTITUTION



X=ARMED SERVICE COMM

Y=FORIGN; REL. COMM.

CORRIDORS 10-12 PEOPLE WIDE

N

RAYBURN. BLDG

SOUTH CAPITOL