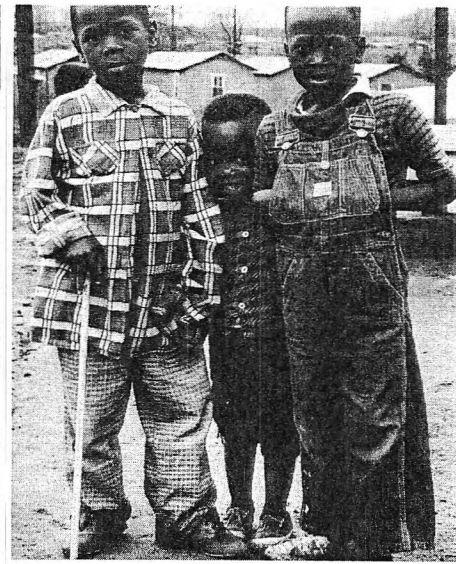
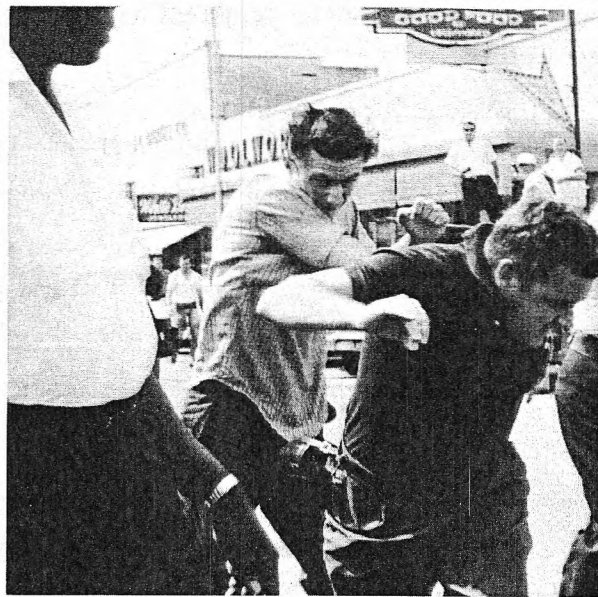


**IT'S GOING TO BE AN EXPENSIVE SUMMER . . .**



**BUT THE DIVIDENDS  
CAN BE IMMEASURABLE.**

(Bogalusa, Louisiana, April 20, 1965)

Bogalusa has nearly 27,000 residents; is located in the black belt 60 miles due north of New Orleans and just across the river from Mississippi. Its chief industry is the paper mill of Crown Zellerbach.

The Klan operates openly, headquartered in a fire station across the street from Bogalusa's City Hall; it burns crosses, flogs local Negro residents and CORE workers. The Klan prevented former U. S. Congressman Brooks Hays, a racial moderate, from speaking there last January.

CORE workers report similar conditions throughout the state. In Ferriday, Louisiana, Frank Thomas, Negro, 52, was burned to death in his small store this winter. He was covered with gasoline by white men who then set him and his store aflame. No arrests have been made for his murder. His only offense was that he stood up to the Klan.

A small band of CORE workers has been keeping hope alive in Bogalusa and a score of other towns. In Jonesboro, CORE is coordinating the rebuilding of two Negro churches which were burned to the ground in January after CORE held voter registration classes there. In Clinton, a Freedom School, organized and staffed by CORE, conducts classes in all areas; one of the most successful classes is in Negro history and the discussion is now lead by the older students. In Monroe, local members of the Negro community, working in cooperation with CORE, submitted an excellent, detailed plan for economic and social improvement for the entire city—not just the Negro population.

We are proud of our program and staff in Louisiana and similar projects being carried throughout the South by CORE. Our summer program will also help to keep hope alive in the blackbelt of Mississippi, the Carolinas and northern Florida.

CORE's work in the South will focus on every area of discrimination and segregation; we are working to develop local leadership and local organization. Southern CORE leaders do not want to speak for the community—we try to help the community speak for itself, for this is the most crucial step to achieve full human rights. But this program and direction are difficult.

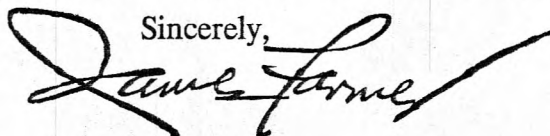
This summer our regular staff will be joined by 400 student volunteers. These volunteers need training in non-violence, voter registration and community organization

procedures. They must have cars and fuel to bring people to the registrar's office. (In many areas, traveling on foot is an invitation to death.) They need supplies for the Freedom Schools and community centers.

The two-way radio system for Louisiana (to prevent a repeat of last summer's tragedy when two CORE staff members and a volunteer were killed in Mississippi) will cost ten to twelve thousand dollars, alone; costly, but necessary. It's going to be an expensive summer, but the dividends can be immeasurable.

Please help the CORE Southern Summer Program. Mail your check **today**. The need is urgent.

Sincerely,



James Farmer  
National Director, CORE  
Congress of Racial Equality

*(We are listing CORE's 1965 Southern Summer Program projected expenses so that you will know where your help is going.)*

|   |           |
|---|-----------|
| Training of summer staff workers & volunteers.....  | \$ 5,000  |
| Subsistence 220 full-time Louisiana staff workers.....  | 50,000    |
| Subsistence 20 full-time South Carolina staff workers.....  | 5,000     |
| Subsistence 20 full-time N. Florida staff workers.....  | 5,000     |
| Subsistence 35 full-time Mississippi staff workers.....   | 8,000     |
| Southern Regional Headquarters, Communications Centers.....                                       | 10,000    |
| Housing, 50 parish bases, Freedom Schools, Community Centers.....                                 | 30,000    |
| 50 two-way radios, plus walkie-talkies.....   | 15,000    |
| Telephone (including WATS lines).....   | 12,000    |
| Maintenance, 50 cars (gas, oil, leasing, insurance, etc.).....                                    | 30,000    |
| Books, office supplies, equipment, etc. for parish bases, Freedom Schools, Community Centers..... | 25,000    |
| Program Materials.....  | 5,000     |
| Legal expenses (including bond).....  | 40,000    |
| Special emergency expenses (medical, etc.).....   | 25,000    |
|   | <hr/>     |
|   | \$265,000 |

CORE, 38 Park Row, New York, N. Y. 10038

James Farmer, *National Director*  
Dr. George Wiley, *Associate National Director*  
Richard Haley, *Southern Regional Director*  
Carl Rachlin, *Esq. General Counsel*

#### ADVISORY COMMITTEE

Ralph Abernathy  
James Baldwin  
Roger N. Baldwin  
Katrina M. Barnes  
Algernon D. Black  
James B. Carey  
Allan Knight Chalmers

Grenville Clark  
John Cogley  
Earl B. Dickerson  
Eugene E. Frazier  
Harold Gibbons  
Roland B. Gittelsohn  
Sidney Hollander  
George M. Houser

E. Stanley Jones  
Bishop F. D. Jordan  
Martin Luther King  
Douglas Levin  
David Livingston  
Will Maslow  
A. J. Muste  
Dorothy Norman

A. Philip Randolph  
Ira DeA. Reid  
Walter P. Reuther  
Hobson P. Reynolds  
Jackie Robinson  
Arnold M. Rose  
Fred M. Shuttlesworth  
Lillian Smith

C. K. Steele  
Gardner Taylor  
Howard Thurman  
Bishop W. J. Walls  
Goodwin Watson  
Joseph Willen  
Jerry Wurf  
Charles S. Zimmerman